



Facsimile

### LAB-GROWN DIAMOND REPORT

**Report No : SGLXD426484E**

**MUMBAI**

#### GRADING INFORMATION

Shape Round Brilliant

Carat Weight 1.52 carat

Clarity Grade VS1

Color Grade F

Cut Grade:

Proportions Very Good

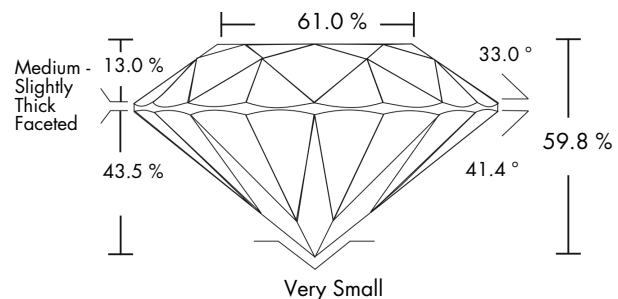
Polish Good

Symmetry Very Good

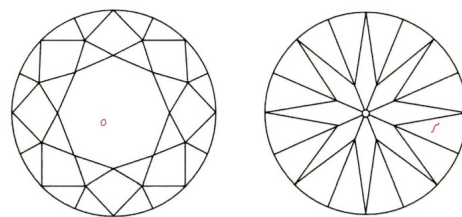
Fluorescence None

Laser Inscribed LAB GROWN SGLXD426484E

### PROPORTIONS



### CHARACTERISTICS



#### Key to symbols



Red symbols denote internal characteristics. Green and Black symbols denote external characteristics. Symbols do not usually reflect the exact shape or size of the characteristics. All characteristics may not be shown.

[www.sgl-labs.com](http://www.sgl-labs.com)

### TECHNICAL INFORMATION

Measurements 7.45 - 7.51 x 4.47 mm

Girdle Medium - Slightly Thick

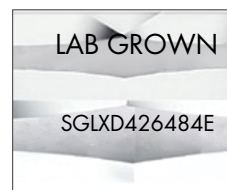
Culet Very Small

Depth 59.8 %

Table Width 61.0 %

Crown Height 13.0 %

Pavilion Depth 43.5 %



LASER INSCRIPTION



Scan the code with a smartphone to view the certificate on our website



AUTHENTICATED IN SGL



### LAB-GROWN DIAMOND REPORT

**Report No.SGLXD426484E**

**MUMBAI**

#### GRADING RESULTS

Shape Round Brilliant

Carat Weight 1.52 carat

Clarity Grade VS1

Color Grade F

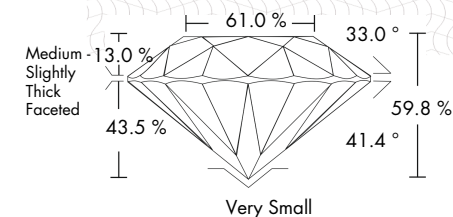
Cut Grade Value Very Good

#### ADDITIONAL GRADING INFORMATION

Cut Polish Good

Cut Symmetry Very Good

Fluorescence None



**Report No. SGLXD426484E**

#### GRADING INFORMATION

Shape Round Brilliant

Carat Weight 1.52 carat

Clarity Grade VS1

Color Grade F

Cut Grade :

Proportion Very Good

Polish Good

Symmetry Very Good

Fluorescence None

Laser Inscribed LAB GROWN SGLXD426484E

#### TECHNICAL INFORMATION

Measurements 7.45 - 7.51 x 4.47 mm

Girdle Medium - Slightly Thick

Culet Very Small

Total Depth 59.8 %

Table Width 61.0 %

Crown Height 13.0 %

Pavilion Depth 43.5 %



Proud supporter of  
JVC  
DIAMONDS • EDUCATION • COMPLIANCE  
Diamond Supply Chain Protection Kit